

ANALYTICAL REPORT



N-POM Caged-dT-CE Phosphoramidite

5'-Dimethoxytrityl-N3-[[1-(6-nitro-1,3-benzodioxol-5-yl)ethoxy]methyl]-2'-deoxyThymidine, 3'-[(2-cyanoethyl)-(N,N-diisopropyl)]-phosphoramidite

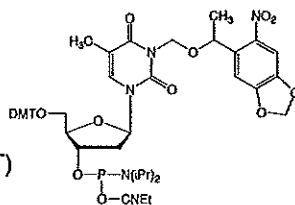
Catalog No.: **10-1534-xx** Specification: GR10-1534-01

Batch No: **G001404**

Released by: *Keena Gates* Date: *6 Jan. 2020*

Inspected by: *Curtis Lam* Date: *6 Jan 2020*

Formula: C₅₀H₆₈N₆O₁₃P MW: 967.99/ FW: 527.38 (N-POM-dT)
FW: 304.20 (dT)



Diluent: Anhydrous Acetonitrile (0.1M Solution*)

50umoles/5mL, 100umoles/1mL, 0.25g/2.58mL, 0.5g/5.17mL, 1.0g/10.33mL

(See Glen Research's Catalog for available pack sizes.

*Expedite & Beckman: use 0.067M solution=1.5x0.1M dilution)

Storage: Refrigerated storage, maximum of 2-8°C, dry. Light sensitive material.

Reanalysis Period: 12 months

Coupling: No changes needed from standard method recommended by synthesizer manufacturer.

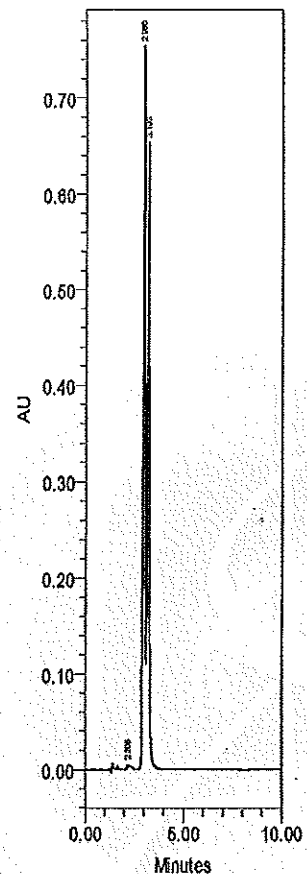
Deprotection: No changes needed from standard method recommended by synthesizer manufacturer.

Please see the safety data sheet for this product at <https://www.glenresearch.com/media/productattach/import/sds/fn10-1534.pdf>.

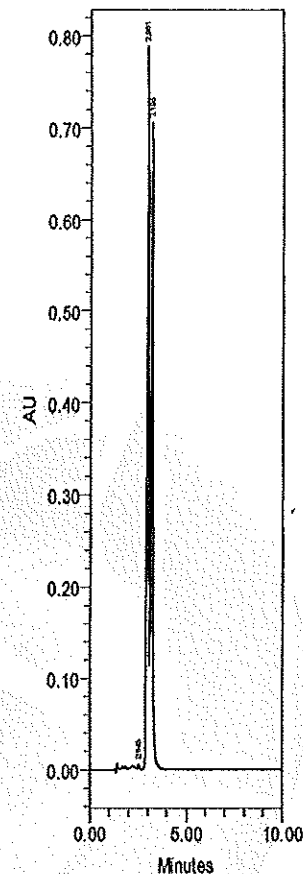
Test	Description	Method	Result
Description	Crisp white foam	Visual Inspection	Conforms
Identity	Compares with reference sample	HPLC	Conforms
Coupling Test		Proprietary Test	100%
Purity by HPLC		Column: RP-18 Detection: UV at 254nm Mobile Phase: CH ₃ CN:TEAA (0.1M, pH7.0), (90:10), isocratic	99.7%
Loss on Drying	Less than 2% by weight	17 hrs/RT/high vac.	Conforms
Solution Test	Clear and free of foreign matter	0.1M solution	Conforms

HPLC TRACES

Quality Chromatogram



Identity Chromatogram



Notes: The Quality Chromatogram is the chromatogram of this batch.. The Identity Chromatogram is the chromatogram of the sample used for the Quality Chromatogram with the reference standard for this product added. The chromatogram may show two major components: these are the diastereomers of the CE-Phosphoramidite.

Quality Chromatogram Analysis

	RT	Height	Area	% Area
1	2.205	3817	28791	0.29
2	2.080	763437	5272148	52.60
3	3.193	853048	4722747	47.12



scan for additional information